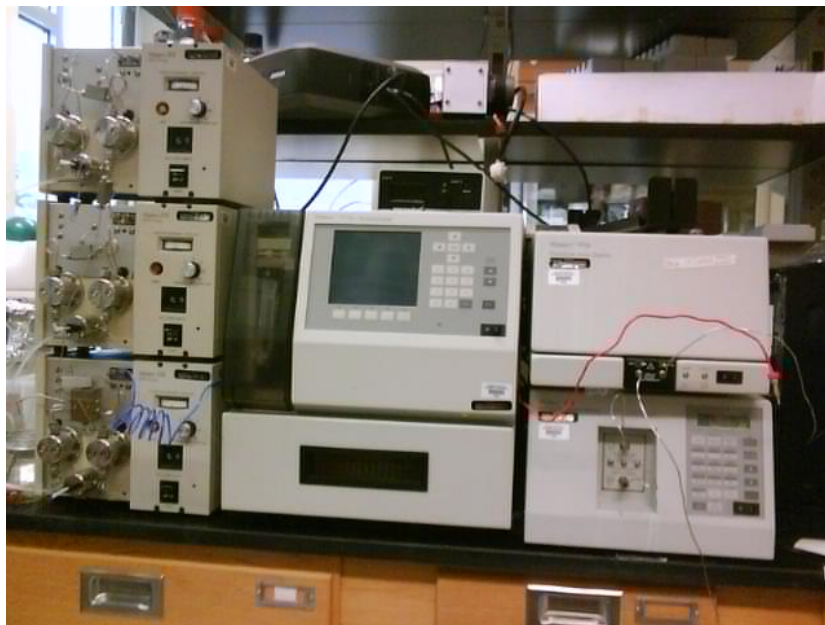


Analytical High Performance Liquid Chromatography System



One analytical HPLC system, consisting of 3 Waters 510 pumps, 717plus autosampler, Waters 996 photodiode array detector (PDA), Waters 474 scanning fluorescence detector, computer workstation with Waters' Empower software.

The Waters 510 pumps can deliver up to 10 ml/min solvent flow rate, with typical flow rate of 0.5 – 1.0 ml/min for common analytical purposes. The Waters 996 photodiode detector is capable of generating 3-dimensional data in the UV range from 190 nm to 800 nm. Chromatograms can be extracted at any wavelength within the scanning range of the corresponding instrument method.

Contact: Alex Poulev, poulev@aesop.rutgers.edu, 732-932-8165 ext. 225