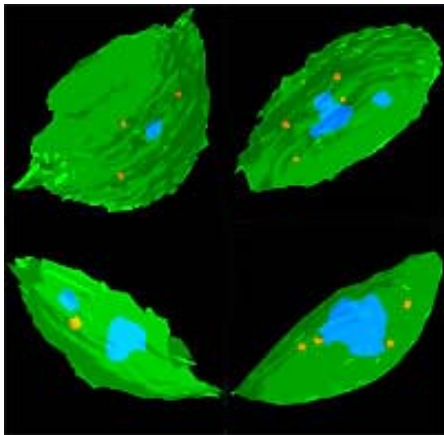


## ***DeltaVision Spectris Restoration Microscopy System***



*DeltaVision Spectris Restoration Microscopy System*



3D fluorescence images of Arabidopsis nuclei labelled with LacI-GFP fusion protein targeted to nuclei with inserted lacO arrays - fluorescence intensities from a Z-series are reconstructed with *softWoRx* image analysis software that is currently installed with our *DeltaVision* Restoration Microscopy System.

Manufacturer: Applied Precision

Filters: Excitation: GFP 460/20; DAPI: 360/40; FITC: 490/20; RD-TR-PE: 555/28; YFP: 492/18, 500/20, 523/20; CFP: 436/10; RFP: 580/20;

Emission: GFP: 500/22; DAPI/CFP: 470/30; RD-TR-PE: 617/73; YFP: 535/20, 568/20;

Objective: 20X, 40X, 60X, 100X

Description: DeltaVision system is used for reconstructing 3D structure of objects through acquire 2D images from consecutive layers of specimen. Images are processed via deconvolution to remove/correct out-of-phase information. It is set up with an inserted Nikon TE300 microscope.

Website: <http://www.appliedprecision.com/lifescience/DeltaVision.html>

Purchased with NSF funding from the Plant Genome Research Program.

Contact: Chongyuan Luo/Lam Lab.; Luo@eden.rutgers.edu; 732-932-8165, ext. 219