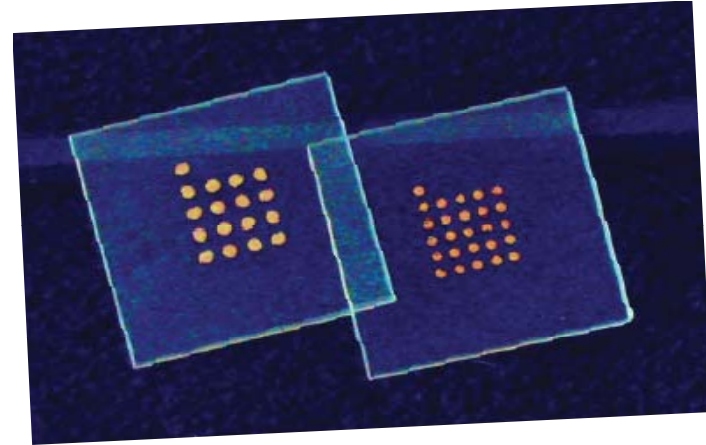


# Surface Plasmon Resonance Equipment

## The SPRImager®II System (GWCTechnologies, Inc.)



The SPRImager®II can be used to monitor molecular interactions regardless of chemical composition. It can be used to study protein, DNA, RNA, carbohydrates, and other molecules, or even whole cells and viruses. Some examples of applications: study cell receptor populations on whole cells, measure antibody affinities and determine kinetics of molecular interactions. The SPRImager®II is label-free, versatile and flexible.

Purchased with funds from SEBS.

Contact: Rong Di / Tumer Lab  
Phone: 732-932-8165 x217  
Email: di@aesop.rutgers.edu